

Wyjoland has worked with leading animal health companies to develop and manufacture pharmaceuticals and nutritional products since 1988. Our commitment to quality, our manufacturing flexibility, and our responsive customer service have earned Wyjoland a solid reputation as a trusted, capable partner that understands the value of innovation in the animal health market.

Wyjoland's customers value our approach to:

- **Creating competitive advantage through innovation**
- **Achieving new cost savings**
- **Allowing you to focus on your core business**



Let's create synergy



**ACCORDING TO ICH SPECIFICATIONS
TESTING AND TRIALS**



QUALITY CONTROL



PACKAGING



GMP MANUFACTURING

Powder, liquid and semi-liquid forms



DEVELOPMENT AND INDUSTRIAL TRANSFER

*Want to test
our capabilities?*

*Contact
our sales team at
+ 33 (0)2 54 25 61 32*



RELIABILITY AND SAFETY FOR YOUR STABILITY STUDIES

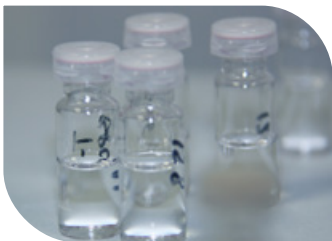
We can execute tailor-made stability studies in ICH guideline-chambers according to your needs.



Our range of operational and regulatory services include:

- **ADVISORY SERVICES FOR, AND DRAFTING OF PROTOCOL STUDIES**
- **STORAGE AND HANDLING OF SAMPLES**
- **ANALYTICAL STUDIES**
- **RESEARCH REPORT PREPARATION AND WRITING**

Temperature (°C)	Moisture (%)
25	60
30	65
40	75



- More than 20 years of experience in the veterinary field.
- Large sample storage capacity
- Secure facilities
- Wide range of equipment for analytical studies
- Monitoring quality according to GMP standards, controlled by the French agency for veterinary medicines.

* Real time recording and data storage on external hard disk.

24/24 and 7/7 supervision (alarms).



YOUR BENEFITS

- Large storage capacity that is fully compliant with ICH guidelines.
- Extensive range of testing and performance equipment for analytical studies.
- Quality controlled by the French veterinary medicine agency to GMP standards.